

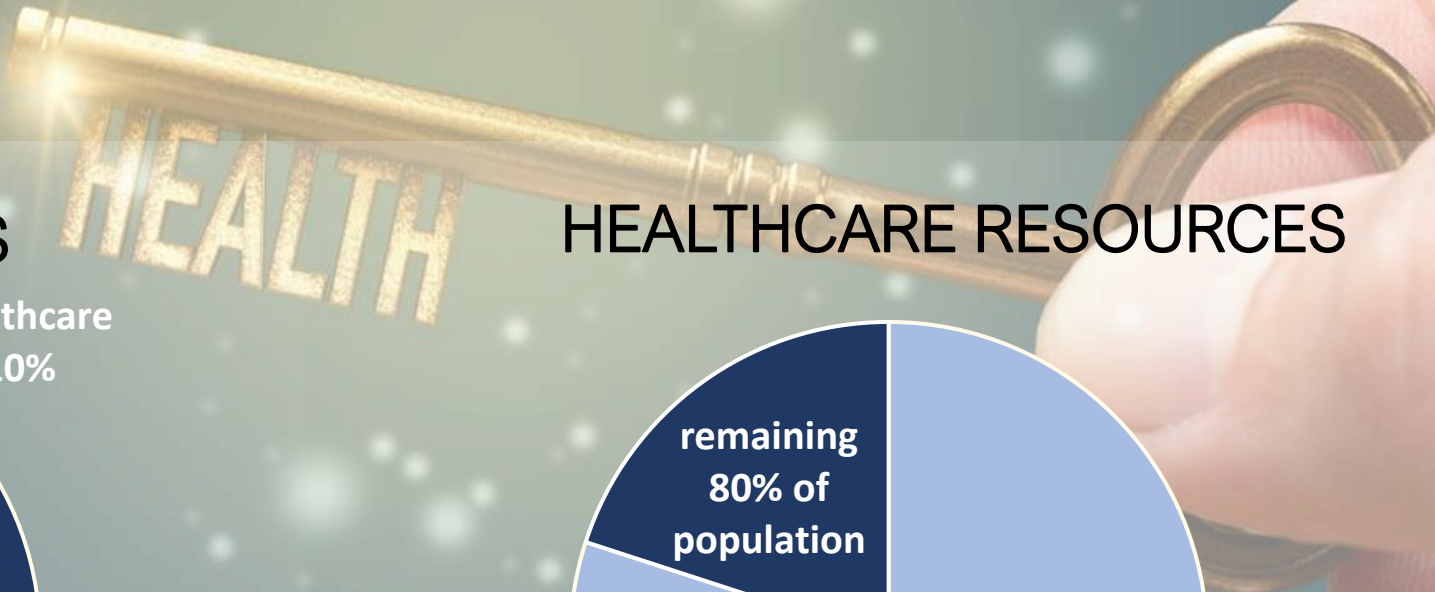
# COMMUNITY DEVELOPMENT

*Community Development is a comprehensive approach grounded in principles of empowerment, equity, human rights, inclusion, social justice, self-determination and collective action (Kenny, 2007)*

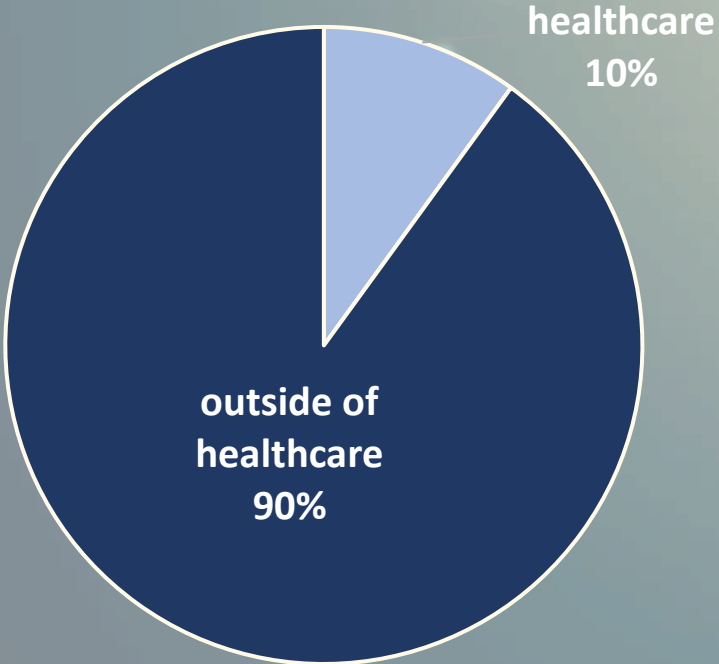
---

PRESENTED BY:  
HEATHER CHASE  
COMMUNITY DEVELOPMENT  
HORIZON HEALTH NETWORK

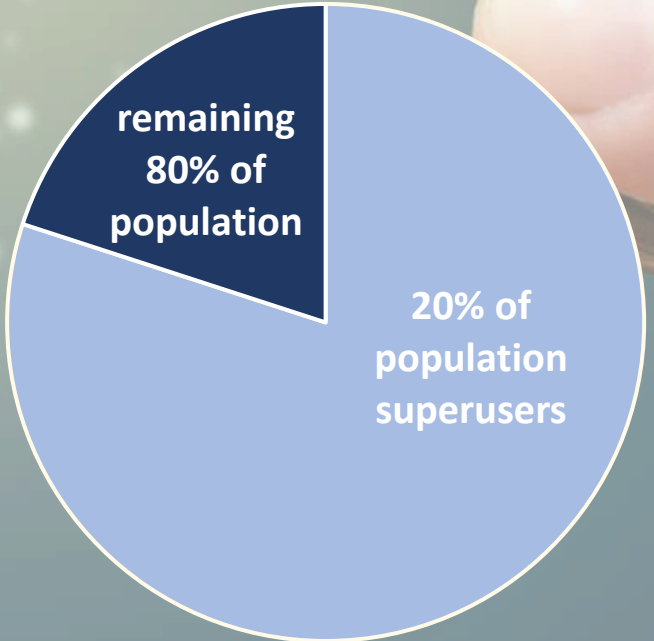




### HEALTH STATUS



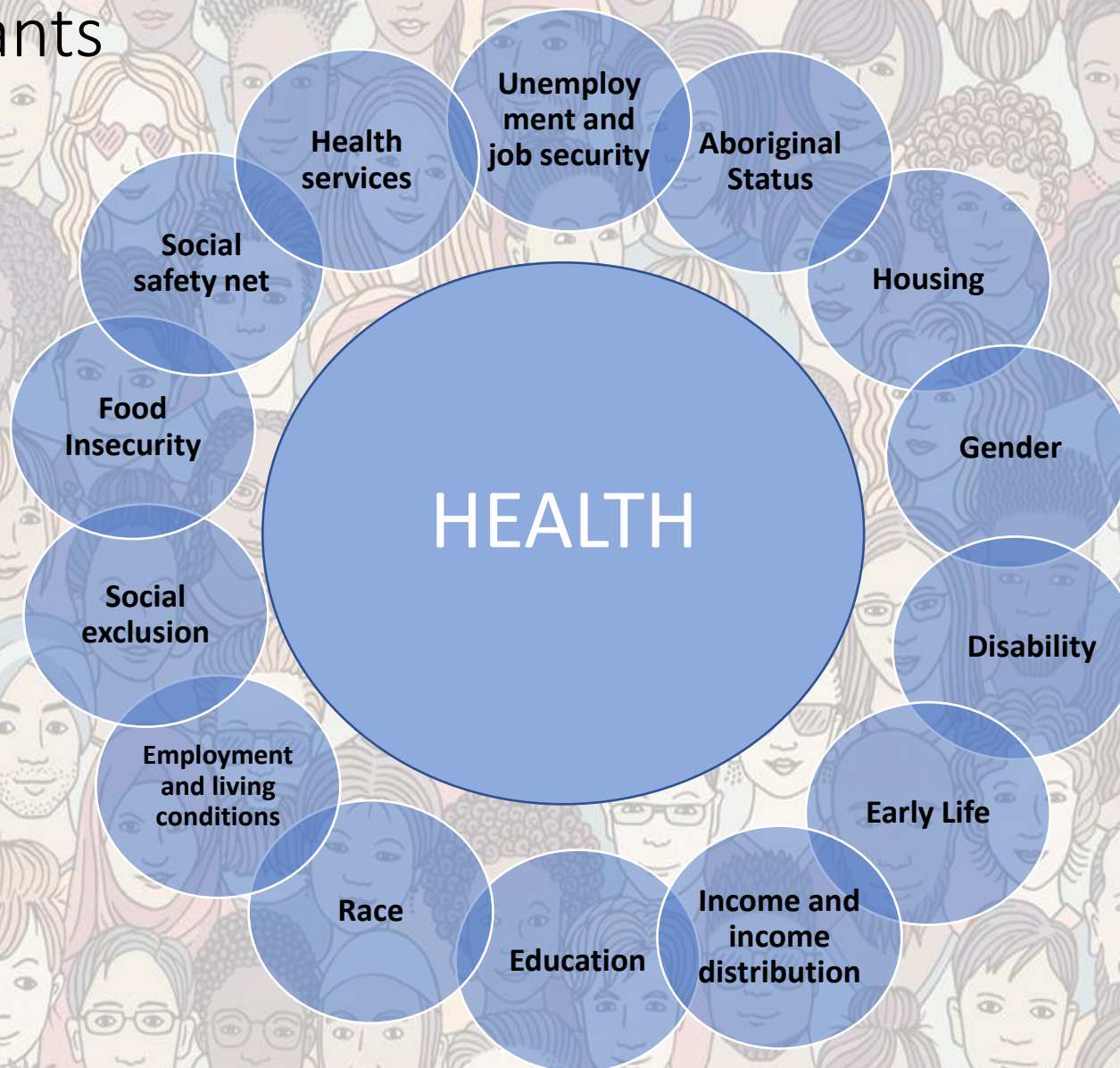
### HEALTHCARE RESOURCES





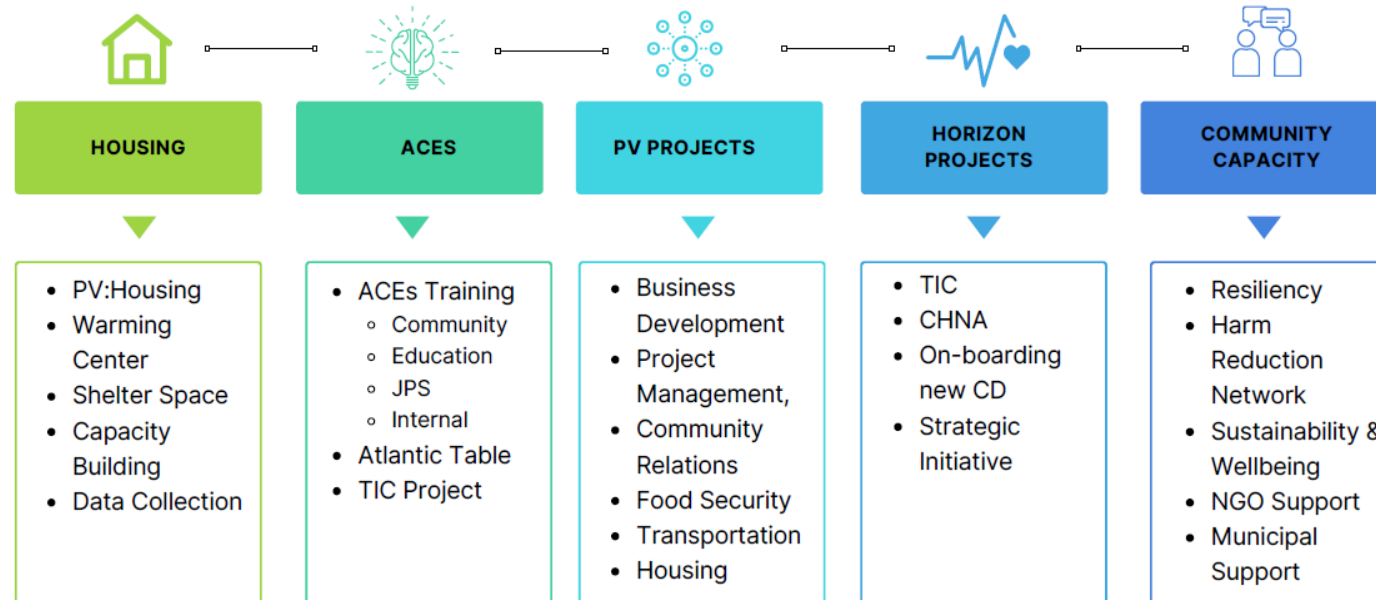
# POPULATION HEALTH

## Social Determinants of Health



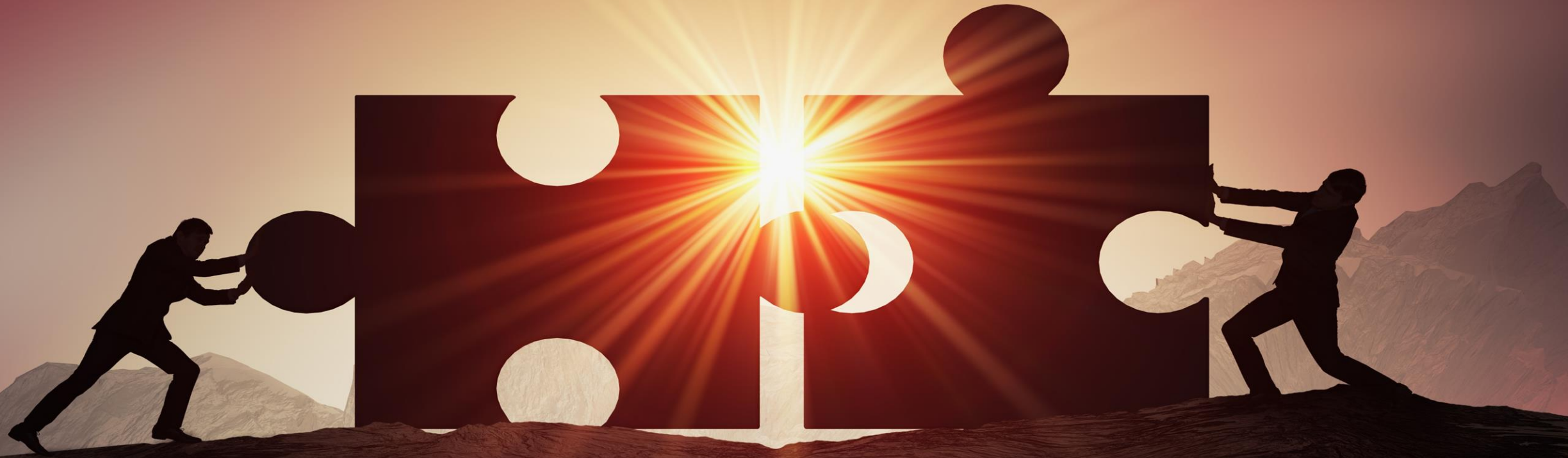


# CD Workplan 2023-2024





# PARTNERSHIP



ACROSS SECTORS  
AND  
WITH OUR COMMUNITIES



# BOOTS ON THE GROUND REPORT

## Horizon's Community Developers in Action during COVID-19 Response

HORIZON'S NETWORK OF **13** COMMUNITY DEVELOPERS JOINED LOCAL ACTION TO MANAGE THE UNINTENDED IMPACT OF COVID-19 EMERGENCY RESPONSE MEASURES.



“Community Development strengthens the bonds between people resulting in an increased capacity to work towards common goals. A Community Development approach can support health and well-being by integrating and complementing health service delivery (WHRA, 2010).”

FIVE

**1**  
ENGAGE COMMUNITIES

**2**  
STRENGTHEN COMMUNITY CAPACITY

**3**  
IMPROVE ACCESS TO SERVICES AND INFORMATION

**4**  
BUILD PARTNERSHIPS AND RELATIONSHIPS

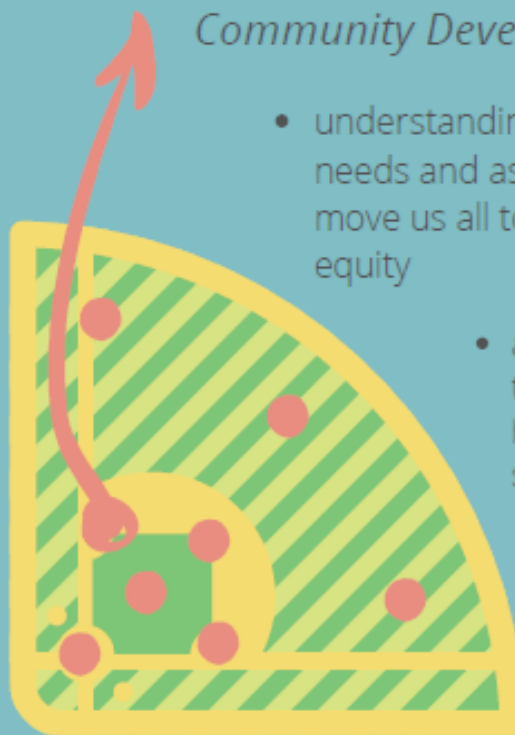
**5**  
CREATE SUPPORTIVE ENVIRONMENTS

Key Strategies of Community Development

Horizon invests in **Community Health** by putting a player on the field

Community Developers contribute to:

- understanding and working with local needs and assets to find solutions that move us all towards greater health equity
- a connected system that is able to work TOGETHER for a healthier and more resilient society.



Community Development work is fundamental to health care work



# OUR TEAM

DANNY BRAUN	TOBIQUE VALLEY,HARTLAND	BA, BKIN
JENNIFER HOGAN	DOWNTOWN FREDERICTON, OROMOCTO	BSC,BIO
CAROLYN LANDRY	FREDERICTON, FRANCOPHONE	BSW
ALLYSON DAAMEN-THORNTON	CHIPMAN, MINTO	BSC, RD
SHERYL PEPIN	HARVEY, MCADAM	BBA,HR
EMILY SHAPIRO	UPPER RIVER VALLEY	MA,GEO
AMY O'KEEFE	ALBERT CO.,PETITCODIAC,SALISBURY	BSW
MAX DUCSHARM	TANTRAMAR	BSW
HEATHER CHASE	EASTERN CHARLOTTE	
DOMINIQUE DAIGLE	SAINT JOHN (FRANCOPHONE)	MSW,BSW,BA
SAMANTHA CARVELL	SAINT JOHN (ANGLOPHONE)	BSW
ALANNAH PEARSON	SUSSEX	BA,ENG,FR,PSYCH
OPEN POSITION	MIRAMICHI AREA	
OPEN POSITION	CENTRAL MIRAMICHI	
OPEN POSITION	MONCTON	
OPEN POSITION	WESTERN CHARLOTTE	